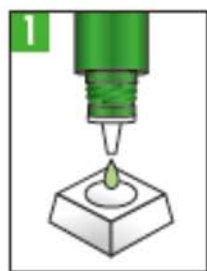


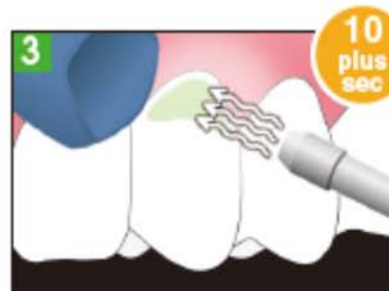
Treatment of dentinal hypersensitivity / Coating of exposed cervical dentin



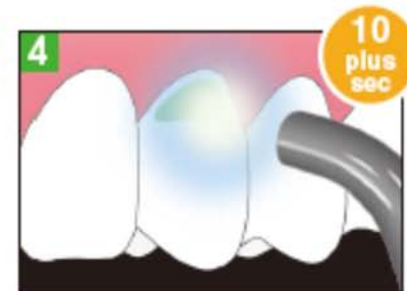
Dispense



Apply TOKUYAMA SHIELD FORCE PLUS, then leave for 10+sec

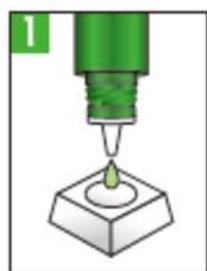


Apply weak air (5sec)
→ Strong air (5+sec)



Light cure for 10+sec

Sealing of prepared tooth to alleviate / prevent tooth sensitivity (Direct Restorations)



Dispense



Apply TOKUYAMA SHIELD FORCE PLUS, then leave for 10+sec



Apply weak air (5sec)
→ Strong air (5+sec)

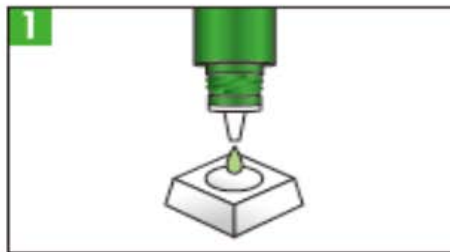


Light cure for 10+sec

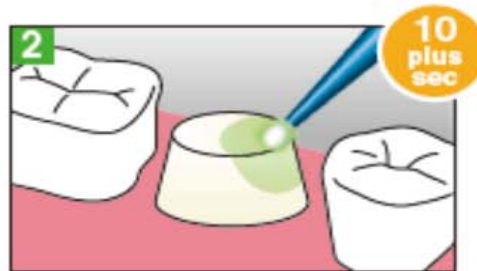


* If using a total etch adhesive system, **etchant must be applied "AFTER" TOKUYAMA SHIELD FORCE PLUS procedure.**

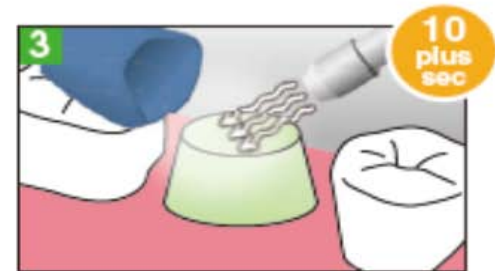
Sealing of prepared tooth to alleviate / prevent tooth sensitivity (Indirect Restorations)



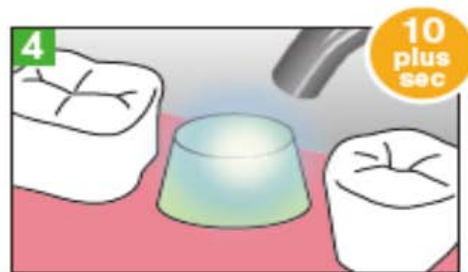
1
Dispense



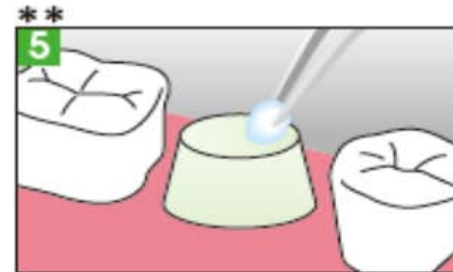
2
Apply TOKUYAMA SHIELD FORCE PLUS, then leave for 10+sec



3
Apply weak air (5sec)
→ Strong air (5+sec)



4
Light cure for 10+sec



5
Wipe unpolymerized layer with alcohol



** **BEFORE taking impression, it is essential to wipe dentin surface with alcohol**, removing unpolymerized layer of TOKUYAMA SHIELD FORCE PLUS that could prevent an accurate impression.

*** **Do NOT use temporary resin-based material**, it may adhere to the cured TOKUYAMA SHIELD FORCE PLUS. The use of water-based cement would be recommended for temporary cementing, and temporary stopping would be recommended for temporary filling.